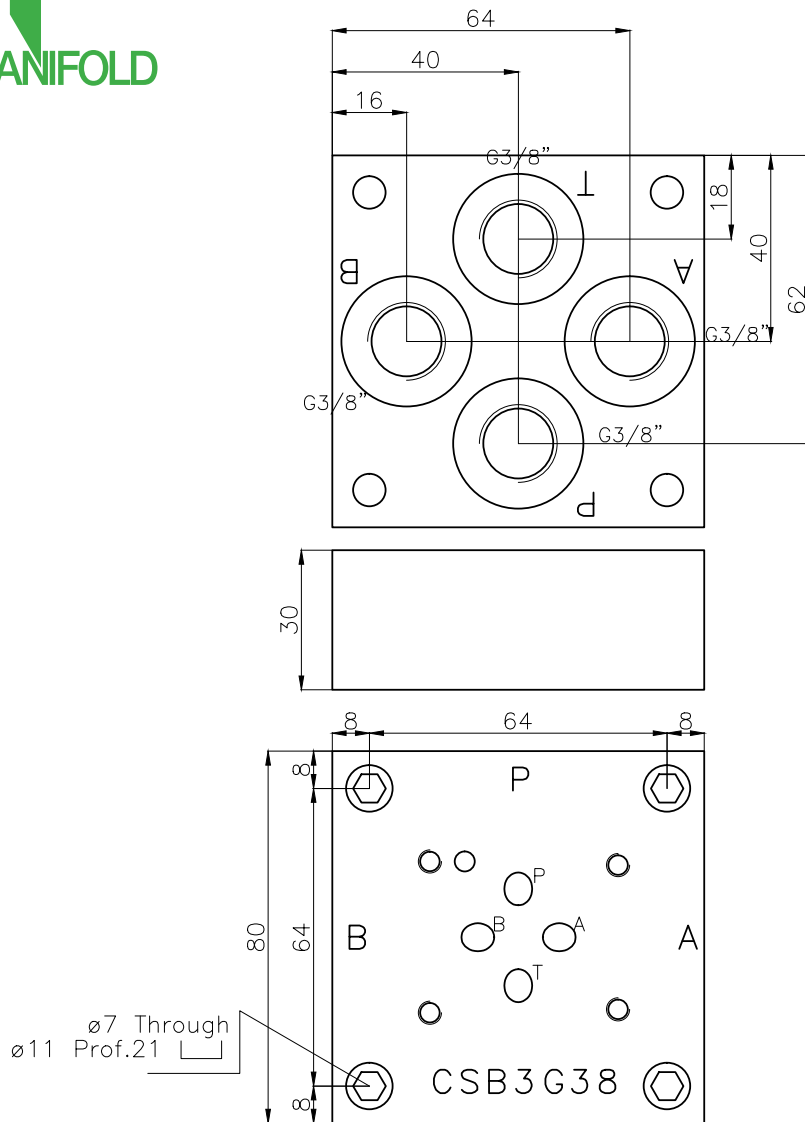
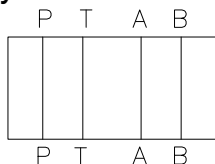




CSB3G38



Hydraulic scheme



Technical specification

Material: Steel  
 Treatment: ISO9717-MnPh  
 Pressure: 300bar  
 Weight: 1.5kg  
 Flow rate: 60l/min

Designation code:

CPM C S B 3 G38  
 Subplate BSP G3/8"  
 Cetop03  
 Bottom entry