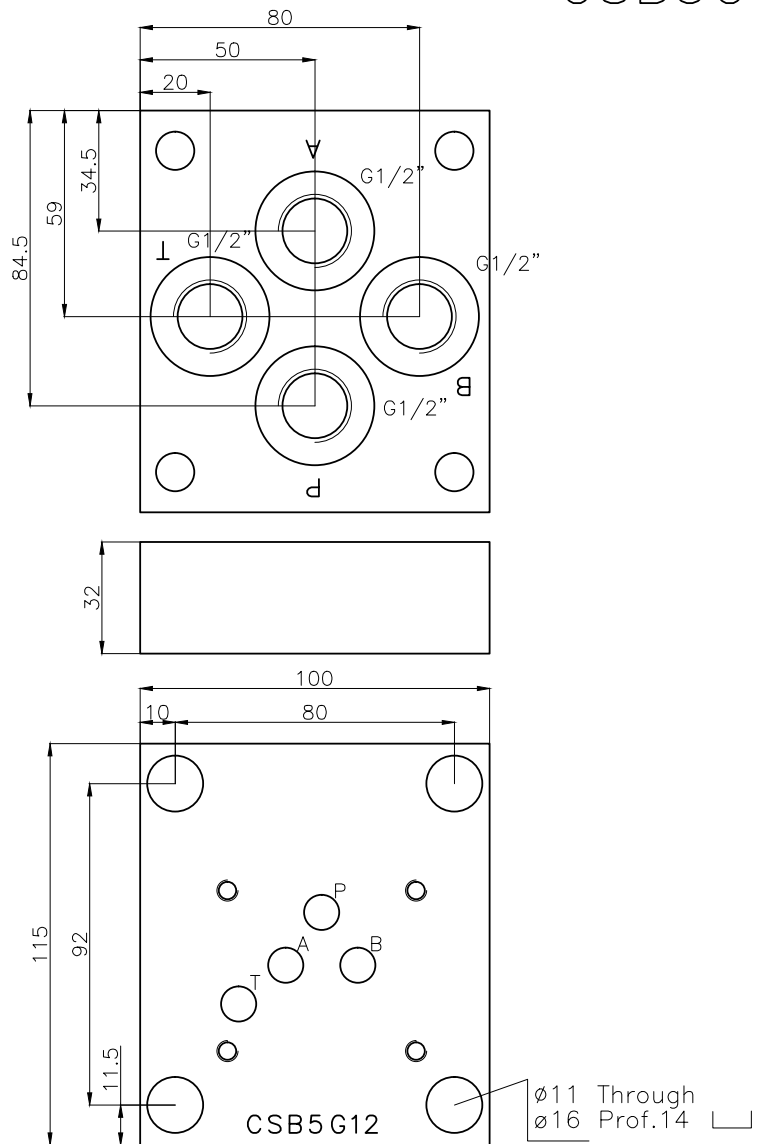
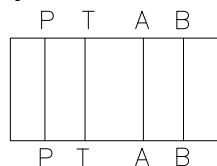




CSB5G12



Hydraulic scheme



Technical specification

Material: Steel-Acciaio
 Treatment: ISO9717-MnPh
 Pressure: 300bar
 Weight: 2.6 kg
 Flow rate: 100l/min

Designation code:

CPM C S B 5 G12
 Subplate BSP G1/2"
 Cetop05
 Bottom entry