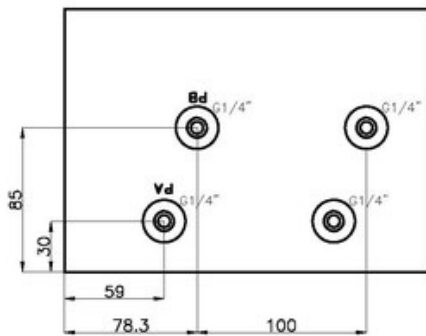
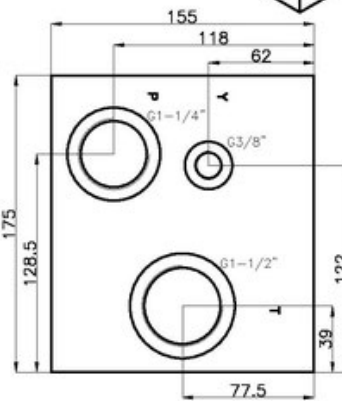
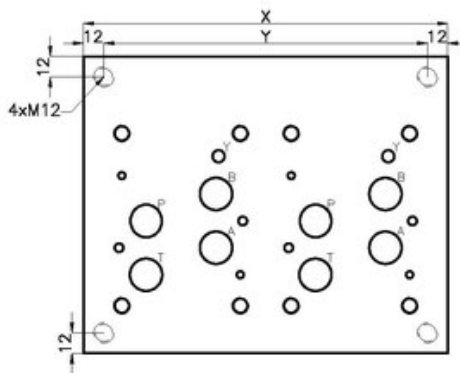
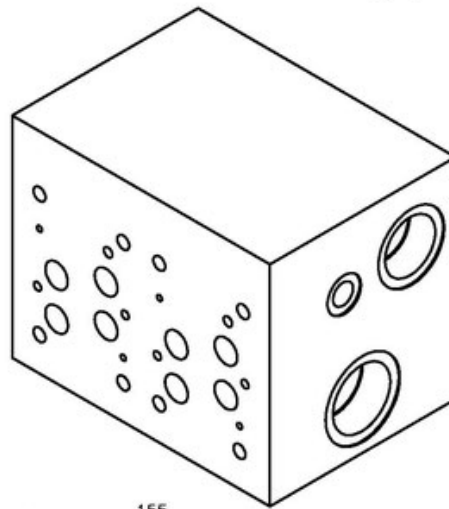
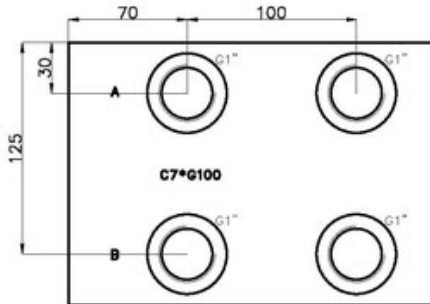


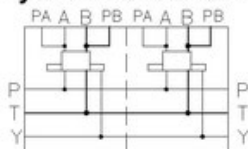


C7*G10TP



Stat.	X	Y	kg
1	115	91	19
2	215	191	35
3	315	291	51

Hydraulic scheme



Technical specification

Material	GJS-400-15
Treatment	ISO9717-MnPh
Pressure	300bar
Flow rate	270l/min

Designation code:

C 7 * G 1 0 TP
 CPM — C
 Cetop07 — 7
 Station number — *
 — G 1
 — 0
 — TP — Pressure test points
 — No relief valve
 — BSP G1"